

*Proud Sponsor of the  
148th Almonte Fair!*



**ROYAL LEPAGE**



Gale Real Estate

INDEPENDENTLY OWNED AND OPERATED, BROKER

*Proudly Serving Our Community  
Since 1948*

48 Mill Street, Almonte

256-1860

1-800-661-3264

*See you at the Fair!*

**148th ALMONTE FAIR**  
**JULY 21, 22, 23 2006**

# **LIVESTOCK PRIZE LIST**

**THEME:  
“EWE AIN’T SEEN  
NOTHIN’ YET”**



**Presented By  
North Lanark  
Agricultural Society**



## PRINTING & COPY CENTRE

224 Bridge Street, Carleton Place

**Tel: 257.8453** Fax: 257.8680

info@fergusongraphics.ca

**Digital & Offset Printing**

**Graphic Design & Layout**

**YOUR ONE-STOP FOR  
XEROX DIGITAL COLOUR! X**

**FOR ALL YOUR  
PRINT & COPY NEEDS**

**Canadian Co-operative Wool Growers Limited**

## C.C.W.G Livestock Supply

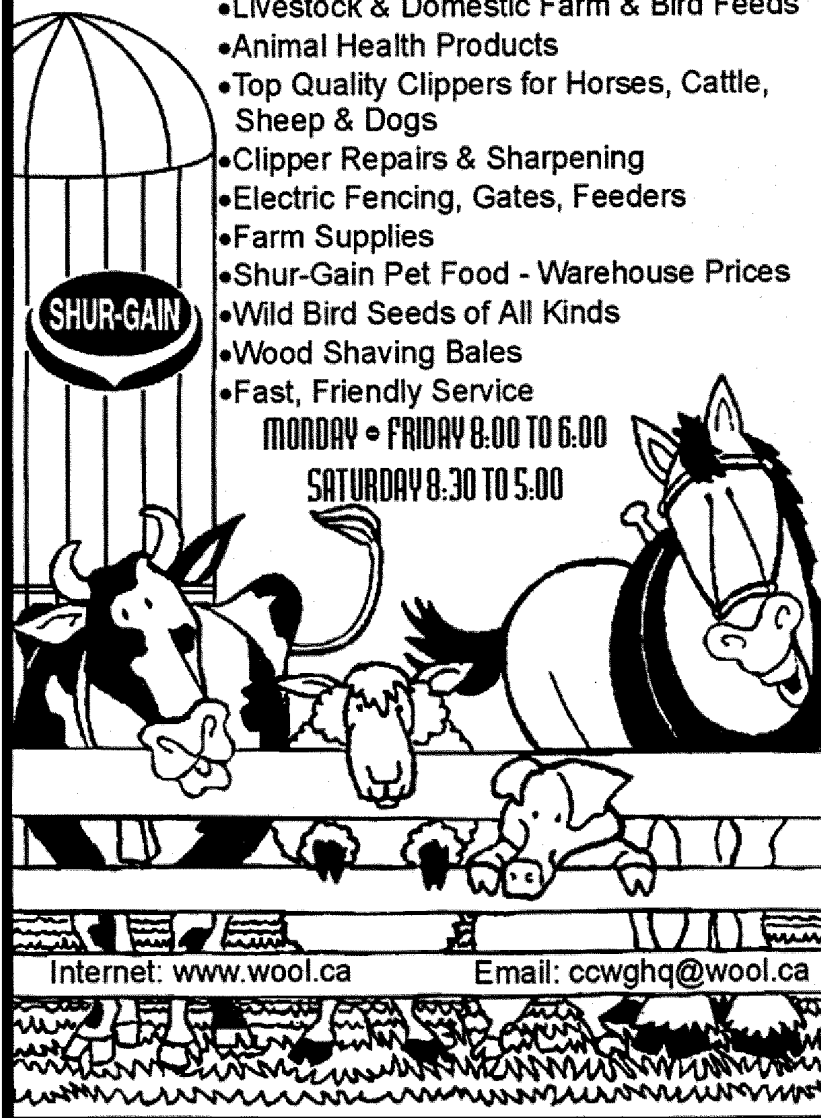
142 Franktown Road, Carleton Place

Tel: (613) 257-2714 Fax (613) 257-8896

- Livestock & Domestic Farm & Bird Feeds
- Animal Health Products
- Top Quality Clippers for Horses, Cattle, Sheep & Dogs
- Clipper Repairs & Sharpening
- Electric Fencing, Gates, Feeders
- Farm Supplies
- Shur-Gain Pet Food - Warehouse Prices
- Wild Bird Seeds of All Kinds
- Wood Shaving Bales
- Fast, Friendly Service

MONDAY • FRIDAY 8:00 TO 6:00

SATURDAY 8:30 TO 5:00



Internet: [www.wool.ca](http://www.wool.ca)

Email: [ccwghq@wool.ca](mailto:ccwghq@wool.ca)

## NOTES

## TABLE OF CONTENTS

ITEM	PAGE NO.
Table of Contents	1
Admission Rates, Passes	2-3
President's Message	4
Homecraft President's Message	4
General Information	5-6
Charity Caring Tree	7
Schedule of Events	8-9
Family Fair Special	10
Reptile Show	11
Scent-R-Stage Dog Show	11
2006 Lucky Draw	12
2006 Homecraft Division Draw	13
Special Children's Draw	13
Entertainment At Fair	14
Cow Plop Bingo	15
Community Displays	16
Rules & Regulations of NLAS	17-19
Heavy Horse Show	20-26
Chili Cook-Off	26
Light Horse Show	27-28
Dairy Cattle Show	29-33
Beef Cattle Show	34-35
Sheep Show	36-37
Goat Show	38-40
Pigeon Show	41
Donations in 2005	42-43
Past Presidents of NLAS	43
Privacy Act	44



**FAMILY DISCOUNT STORE**

25 Lansdowne Ave., Carleton Place, ON K7C 3S9

NORTH LANARK  
AGRICULTURAL SOCIETY  
**148th ALMONTE FAIR**  
**JULY 21 - 23, 2006**

**THEME: "EWE AIN'T SEEN  
NOTHIN' YET"**

**ADMISSION RATES FOR 2006**

Adults - \$6.00

Children (7 to 12 Years of Age) - \$4.00

Children (under 6 Years of Age) - Free

Weekend Family Pass \$30.00 (2 adults & 4 children)

**LIMITED HANDICAP PARKING AVAILABLE ON GROUNDS**

**INSIDE & OUTSIDE CONCESSIONS:**

Linda Burnette – 256-2819

**NOTE:** Everyone entering fairgrounds will be given a wristband to be worn while on site. New colour of wrist band each day. Anyone without a wristband will be charged the entry fee or escorted from the grounds. No alcohol or drugs permitted on grounds.

**NOTE TO FAIRGOERS: NON-WORKING DOGS NOT PERMITTED ON THE FAIRGROUNDS.**

**VET ON CALL: Ross Goodman (256-3443)**

**Tax deductible receipts are issued for all cash/cheque donations.**

signs banners vehicle lettering  
sandwich boards illuminated signs  
repairs installations digital printing  
photo enlargements on canvas  
wide format graphics & signs magnetics  
business cards channel letters 3D letters  
decals stickers custom labels sign frames  
carved signs outdoor advertising  
job site signs developer signage  
logo designs electrical sign design

or just come in and see!



380 townline road east

carleton place, on.

[www.53colours.com](http://www.53colours.com)

613.253.5324

have a great time at the fair!

## Kingfish Pumping



SEPTIC TANKS & HOLDING TANKS  
PORTABLE TOILET RENTALS

257-3164  
1-800-631-8316

### COMPLETE INSURANCE SERVICES



Oegema,  
Nicholson  
& Associates

Suite 2, 154 Bridge Street  
Almonte, Ontario K0A 1A0  
Tel: (613) 256-3044  
Fax: (613) 256-0536

**HOLLY RUSHTON**  
Customer Service

**LYNN MCKINLEY**  
Office Manager

**ELDON GAW**  
Accounts Manager



**Mark Costello**  
Owner

Almonte Country Depot  
5736 County Rd 29  
Almonte, Ontario K0A 1A0  
Email: mark@almontecountrydepot.ca

**Tel: (613) 256-1633 Fax: (613) 256-5788**

**Drache LLP**  
TAX, ESTATES & CHARITY LAW



**Chadwick Boyd**

283 McLeod Street  
Ottawa ON K2P 1A1  
T. 613.233.2675, ext. 16  
F. 613.233.6752  
E: chadwickb@drache.com

Almonte office  
T. 613.256.3480  
F. 613.256.5895

[www.drache.com](http://www.drache.com)

## MIDWAY ADVANCE SALES

Advance Sale Bracelet Vouchers cost \$16.00 each up to 6:00 p.m. Thursday, July 20/06. A bracelet is good for midway rides for one day. On site during Fair, bracelets will cost \$26.00. On-Site Ride Coupons will cost \$1.00 each, or 18 coupons for \$16.00.

Bracelets will be available for sale at the following outlets in June 2006:

**Lefebvre - V&S Options**, Almonte

**Queen's Store**, Almonte

**RKT Computer**, Carleton Place

**Giant Tiger**, Carleton Place

**Nicholson's**, Pakenham

**Perth Emissions**, Perth

## NEW IN 2006

**Scent-R-Stage Dog Show** – Saturday, July 22/06 – 12 Noon, 2 p.m. & 4 p.m. at Grandstand

**Beer Garden** Friday, Saturday & Sunday in tent at Grandstand

**Pigeon Show** in Dining Hall on Saturday, July 22/06

**Canadian Army** with types of vehicles used overseas.



380 townline rd east  
(corner of moneely & hwy 29)  
carleton place, on.  
k7c 3s3

tel: 613.253.5324  
fax: 613.253.2654  
toll free: 1.866.503.5353

lesley rochester

SIGN-tist!

email: [sales@53colours.com](mailto:sales@53colours.com)

[www.53colours.com](http://www.53colours.com)

### **The President's Message**

Thank you for opening this booklet, exhibiting items or coming to the Almonte Fair, or supporting us in any way.

Many positive comments have been received concerning recent changes at the Fair, especially the new date, the new midway and improvements to the grounds. You will not see as many physical changes this year; however Barns 3 & 4 will house the education exhibits with the focus on sheep – “Ewe Ain’t Seen Nothin’ Yet”. Check the program for any changes we have made.

We have a new security firm and containers may be examined to prevent unwanted substances and behaviour. We will have a beer tent and security will enforce the rules so that all of us can enjoy this addition to the Fair.

Our entertainment has changed and the Friday evening headliner is Mark Ekins and his band. Mark is a rising country singer from Southern Ontario. Saturday evening is the “Showcase of Stars” featuring young local talent.

I am very proud of our Board and all our volunteers. We have been fortunate to attract many energetic “younger” people to work with rejuvenated members of various ages and experience. Our income from non-fair events has doubled; some of these projects and events are the “Truck & Tractor Pull” in May and the “Family Car Bingo” in August.

We are working year-round to make the Almonte Fair an entertaining and educational event to attract fairgoers from far and wide and to make our community proud.

Yours very truly,  
Al Barratt

### **The Homecraft Chairperson's Message**

We sure could not have done it without you!!

Each year, as it gets close to fair time, the anticipation rises – and it is always a thrill during the fair to see all the intriguing crafts, delectable food entries, and inspiring flower arrangements.

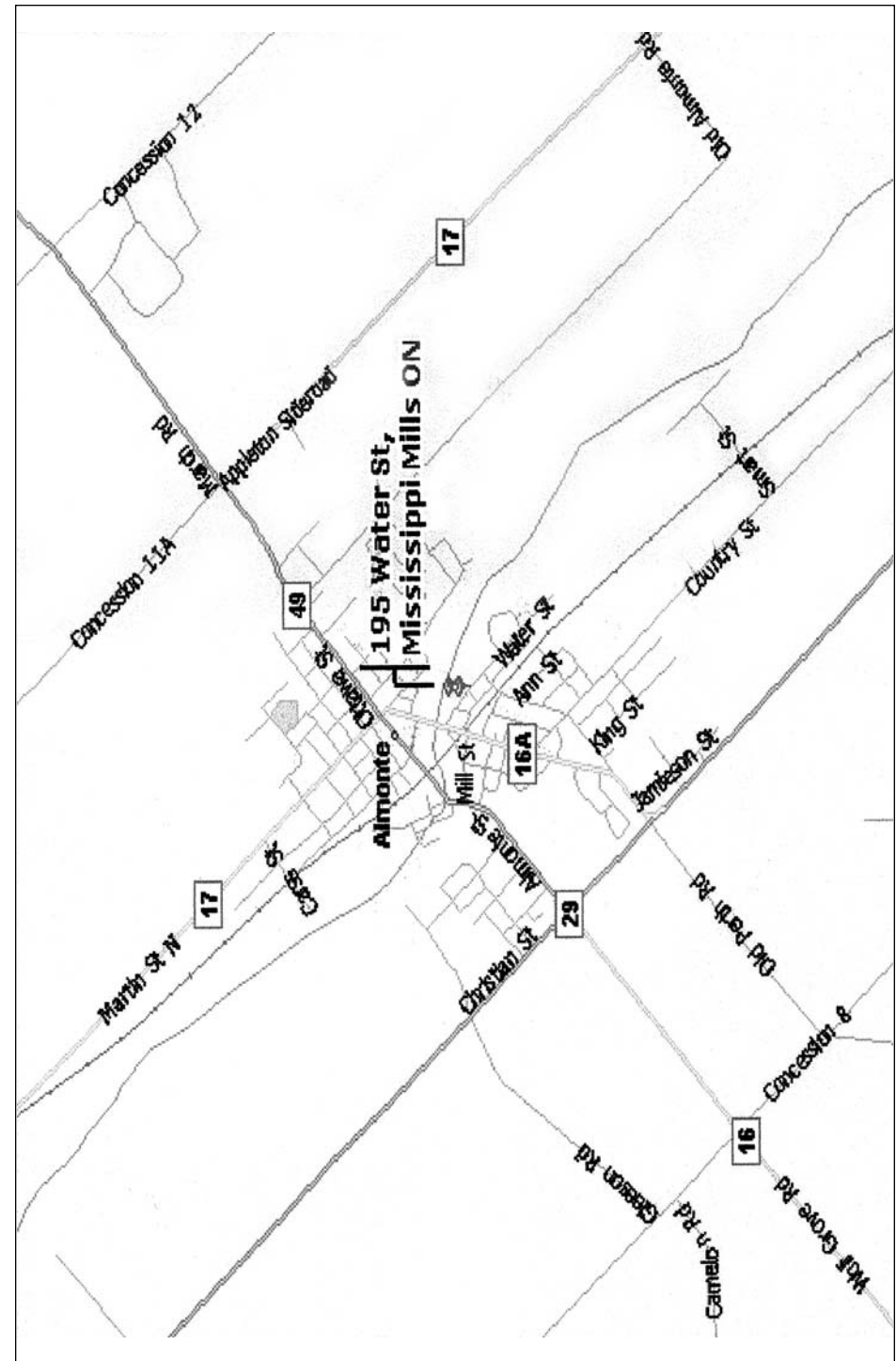
Each Division has something interesting to see and to learn from.

We always like to welcome old favourites but each year we try to add new classes for everyone's enjoyment. The homecraft talent in our area is awesome!

It is most enjoyable to work with the Fair President, Al Barratt, in presenting this year's 148<sup>th</sup> Fair. Also a special “THANK YOU” to all our volunteers as it takes the talents of many dedicated people to put on this annual event. As with other associations, we are always looking for people to join our Society. There are many areas to put your talents to work and we are always looking for new and different ideas. Just contact the Fair Office for more information. Please fill out a survey form in the Agricultural Hall to let us know how we are doing and what you are looking for.

Remember: “Ewe Ain’t Seen Nothin’ Yet” at the 148<sup>th</sup> Almonte Fair.

Yours sincerely,  
Dianna Brydges-Lachapelle



### PRIVACY ACT

The following quote is from the Privacy Commissioner of Canada regarding the new Privacy Act which was implemented January 1, 2003:

The fact sheet issued by the Privacy Commissioner of Canada points out that the presence of commercial activity is the most important consideration for nonprofits. However, fundraising is not a commercial activity, nor is collecting membership fees, organizing club activities, compiling a list of members' names and addresses, or mailing out newsletters. While the act of asking for donations is not subject to the Act, charities and nonprofits are still required to seek appropriate consent if selling, bartering, or leasing lists. These are considered to be commercial activities.

### **PLEASE NOTE**

The North Lanark Agricultural Society does not sell, barter or lease any of the information we have on file regarding names, addresses etc. of all exhibitors at the annual agricultural fair, all members and all donors to the Society.



***Silk Expressions***  
*Fresh and Silk Flowers*  
*Designs For All Occasions*  
*Specialty Gifts and Balloons*  
*Art and Native Crafts*  
Visa, MasterCard & Interac



75 Little Bridge St.  
Almonte, Ontario

(613) 256-4555

### **AL-CAR** Sand & Gravel Ltd.

Aggregates	New Home Construction
Site Development	Road Construction
Septic Systems	Driveways
Equipment Rental	Retaining Walls
Excavation	Ditching/Drainage

**Tel: (613) 257-7625 Fax: (613) 257-2630**  
P.O. Box 56 Carleton Place, ON K7C 3P3

### **NORTH LANARK AGRICULTURAL SOCIETY**

P.O. Box 1608

Almonte, Ontario, KOA 1A0

Telephone: (613) 256-1819 (Fair Office)

(613) 257-5050 (Secretary's phone #)

Fax: (613) 257-5051

e-mail: [audreyk@sympatico.ca](mailto:audreyk@sympatico.ca)

### **2006 N.L.A.S. EXECUTIVE**

Past President:	Frank Pugliese
President:	Al Barratt
1st Vice-President:	Don Dugdale
2nd Vice-President:	Donna MacDonald
Homecraft Chairperson:	Dianna Brydges-Lachapelle
Homecraft Vice-Chairperson:	Debby Wicker
Secretary/Treasurer:	Audrey Kostaszek

### **BOARD OF DIRECTORS:**

Don Dugdale	Linda Burnette	Jim Tims
Wayne Burnette	Donald Sadler	Norma Paul
Lorraine Sadler	Irene Ritchie	Debby Wicker
Frank Pugliese	Al Barratt	Glen Syme
Deborah Jodouin	Brian Brydges	Amy Stevens
Donna MacDonald	Dianna Brydges-Lachapelle	



**Mark Costello**  
Owner/Manager

Almonte Country Depot  
5736 County Rd. #29  
Almonte, Ontario KOA 1A0  
[www.countrydepot.com](http://www.countrydepot.com)

Phone: (613) 256-1633  
Fax: (613) 256-5788  
E-mail: [almdepot@on.aibn.com](mailto:almdepot@on.aibn.com)

## GENERAL INFORMATION

ALL ENTRIES must be in the hands of the Secretary not later than Thursday, July 20/06 at 10:00 p.m. Please send entries as soon as possible by mail to address shown on previous page or by fax to (613) 257-5051. If this prize list is of no use to you, kindly pass it to a friend.

The Secretary/Treasurer will be in the office at the agricultural grounds on weekdays on Wednesday to Friday, July 12 to 15<sup>th</sup>, then Monday to Sunday, July 18 to 23/06. Office hours are from 9:00 a.m. to 5:00 p.m. daily, with lunch hour from 12 Noon to 1:00 p.m. except during the Fair when the office is open continuously.

Office also open from 5:00 p.m. to 8:00 p.m. Monday to Friday, July 17 to 21/069.

If you miss the entry deadline, don't be afraid to bring it in late - entries will be accepted until 10:00 p.m. on Thursday, July 20, 2003. Entering before July 20/06 prevents long line-ups in the office.

## FAIR THEME FOR 2007

### **“JUST KIDDING”** (FEATURING GOATS)



**MACLEAN-YOUNG**  
**PICTURE FRAMERS**

Marilyn Linnenbruegger

89 Mill Street, Almonte, Ontario K0A 1A0  
tel: 613-256-4681 fax: 613-256-6760  
email: marilyn@macleanyoung.com  
www.macleanyoung.com

Doris Camelon  
Lyle's Electrical Services  
Lachapelle's Antiques &  
Furniture Refinishing  
Drs. E.A. St. George  
Dr. Heather Abramenko  
Lanark Community Programs  
Whitehouse Perennials  
Cooney Construction &  
Landscape  
My Upholstery Shop  
The Quilting Quarters  
Valley Veterinary Clinic  
Rocky Ridge Women's  
Institute  
Ottawa/Lanark-Carleton  
Pork Producers  
Grant Creighton, Street KIA  
Currie Families of  
Clearview Lumber  
Products  
Wildrose Country  
Homestead  
Secret Garden Spa  
Sadler's Ceramics  
Carleton Place IGA  
Stonebridge Gardens  
Carleton Place Winery

“Be Seated”  
Jean Cochran  
Phyllis Dack  
Keith McNeely  
Carmel Roy  
Frank Pugliese  
Stanley Sanitation  
Dr. Sonja Wicklum  
Carleton Place Nursery  
Almonte Natural Foods  
Textile Traditions  
Heirloom Craft &  
Quilt Supplies  
Elizabeth Vaughan  
Ross Creighton  
Conklin Supershows  
Eastern Regional  
Clydesdale Assn.  
DB Farms  
Dryburgh Family  
M&P Farm  
Equipment  
Amy Stevens  
Lee Valley Tools  
Hudson's Farm  
Fresh Produce  
Carleton Place  
Blossom Shop

Lorne Heslop  
Cochran Seeds  
Mary Turner  
Caven & Caven  
Veterinarians  
Laurel Miller  
Don Sadler  
Terra Firma Tree  
Service  
The Real Wool  
Shop  
Mississippi  
Holsteins  
Ramsay Women's  
Institute  
Andy Sadler  
Ontario Percheron  
Association  
Ralph Shaw  
Ross AgriStore  
Arnold Polk  
Family  
The Reid Family  
Murphy's Corn  
Almonte Farmers'  
Market  
Silk Expressions

### PAST PRESIDENTS OF N.L.A.S.

J. Menzies\*  
J. Forsythe\*  
P. McCallum\*  
D.W. Stewart\*  
Dr. D.P. Lynch\*  
Wm. Thoburn\*  
A. Johnston\*  
M.B. Cochran\* '39-'40  
W.R. Cochran\* '44-'46  
K. Roberson\* '50-'52  
J.A. Stewart '57-'59  
O. Timmins\* '63-'64  
J.R. Camelon\* '67-'68  
M. James '71-'72  
J. Lowry '75-'76  
J. Paul '79-'80  
J. Stewart '85-'86  
W. Halpenny '89  
M. Timmins '91 & '92  
Bert Acheson '95 & '96  
Irene Ritchie '01 - 03  
(\* - deceased)

Dr. Mostyn\*  
A. Cochran\*  
G.A. Robertson\*  
J.C. Stevens\*  
A.G. Rosamond\*  
J.R. Reid\*  
R.J. Hickey\*  
F. Darling\* '41-'43  
W.A. Metcalf\* '47-'49  
H. Sadler\* '53-'56  
M. Duncan\* '60-'62  
R. Cochran '65-'66\*  
R. Struthers\* '69-'70  
D. Stewart '73-'74  
J. Toshack '77-'78 & '81-'82  
M. Turner '83-'84  
D. Cochran '87-'88  
G. Syme '90  
J. Tims '93 & '94  
Brian Kealey, '97 - '00  
Frank Pugliese, '04 & 05



**The Directors of the North Lanark Agricultural Society wish to thank the following people and companies for their donations in 2005 towards our prizes, trophies, materials, expenses and repairs/renovations of the buildings and grounds.**

Appleton Women's Institute	North Lanark Highland Games	Richard Evans
Panmure Farms Ltd.	Audrey Kostaszek	E. Carroll
Alex & Evelyn Stewart	Evelyn Wheeler	Irene Ritchie
Ramsay Women's Institute	Gale Real Estate	Marie Dunn
Ian McBain	Mimi Edmondson	Donna Carpenter
Cedar Hill Women's Institute	Marilyn Snedden	Sandy McManus
Sheel's Packing	R.A. Sulphur Ins.	Betty Toopo
Elizabeth de Snaijer	Kilpatrick Fuels	Keepsake's Inc.
Leonard & Lillian Lee	Almonte Horticultural Society	Coady's Car Care
Almonte Dental Clinic	Area Church Seniors	Helen Halpenny
T. Cavanagh Construction	Keith Beans	Ron's Pumping Service
J.R.'s Family Restaurant	Patrice's Y.I.G.	John Lesway
Earl Bennett	Steve's Independent Grocer	Almonte Country Depot
Galetta Nurseries	Secret Garden Spa	Carleton Place & District Hort. Society
Mary Grace	Nora Houlton	Pakenham Hort. Society
Ottawa Valley Commercial Horse Assn.	Lanark County Fed. of Agriculture	Royal Canadian Legion, Carleton Place
Mark Laurin	Royal Canadian Legion, Almonte	Clement Custom Services
Almonte Landscape Services	The Herb Garden	Devlin's Collision Centre
Dr. Michael Dolan	Mark Foster	M. Downey Construction
Dr. Naji Louis	Green Tech. Ag. & Turf Inc.	Upper Lanark County Agencies
Stoneridge Gardens & Nursery	Jack Vaughan	Boyce's General Repairs Inc.
Toromont Industries Ltd.	5-Span Feed & Seed	HB Auto Ltd.
John Kelly	Rath Farm Equipment	Carson's Farm Supply Ltd.
John A. Burnett Ltd.	R. Brian Moffatt	Marj. Naismith
Mississippi United Construction Ltd.	Richard Larose	D.E. Brown
Elliott Farm Equipment	Equipment Ltd.	New McLaren Systems
Steve Barrie Backhoe	John & Cathy Grace	Stella's Crafty Corner
Karson Kartage & Konstruktion	Ed's Salvage & Truck	Dale LaRose
Almonte Veterinary Services	MacPherson's Auto Center	Jim & Mary Tims
Al's Farm Tractor Service	R.T. Higgins Livestock	Joy Drynan
Scotty's Auto Centre	David & Emmy Naismith	Terry Cairns
Rosewood Studios Inc.	Ruth Steele	C.R. Gamble
McDougall Insurance	Neilcorp General Contractor	Mack James
Anita Dworschak	Deb. Villeneuve	Bert & Marion Timmins
John Devine	Cuil Aitinn Farms	Norma Paul
Wm. J. Stewart Transport	Universal Carlson	Ross Goodman
Boy Scouts of Canada	Harry Poole	Jim Lowry
Almonte Community Co-Ordinators	Brent Robertson	Millie Lowe
Hamilton Livestock	Carpentry	
Levi Home Hardware	Cecil & Shirley Brydges	
Bert Lowry	John Stewart	
Lanark County Woodworking Club	Sid Mohr	
Wayne Cavanagh	Don Lockhart	
Clayton General Store	Equipment Ltd.	
Jim & Bessie Paul		
Shirley Sonnenburg		

## **CHARITY CARING TREE**

Each year different organizations in the community will be the benefactors of the N.L.A.S. Charity Caring Tree.

Members of the Community are requested to bring in the requested items at Fair time and then after the fair the items will be delivered by the N.L.A.S. to the designated benefactors. Items requested might be bears for a children's group or lap blankets for a senior's centre.

### **FOR 2006:**

**WHAT:** Quilts, Afghans, Blankets (any size)

**WHO:** Lanark Interval House (a local battered women's shelter)

### **AND/OR:**

**WHAT:** Cat or Dog Food / Kitty Litter

**WHO:** Lanark Animal Welfare Society

**WHEN:** Any time during the Almonte Fair

**WHERE:** In the Main Hall near the front door – on the main floor – look for the evergreen tree.

## **BEER GARDEN**

A beer garden will be available for the public at this year's Fair – in a tent near the grandstand.

Hours of operation are:

Friday, July 21 – **6:00 p.m. to 12 Midnight**

Saturday, July 22 – **12 Noon to 12 Midnight**

Sunday, July 23 – **12 Noon to 4:00 p.m.**

**ID will be required** – and no drinks will be served after 11:15 p.m. in the evening or 3:30 p.m. on Sunday.

## SCHEDULE OF EVENTS

### Thursday, July 20/06

- 9:00 a.m. to 10:00 p.m. - Fair Office open
- 3:00 p.m. to 10:00 p.m. - Main Hall entries accepted

### Friday, July 21/06

- 8:30 a.m. to 1:00 p.m. - Judging of Main Hall Exhibits  
(Hall closed during this period)
- 10:00 a.m. to 8:00 p.m. - Education Building open
- 1:00 p.m. - Almonte Fair and Conklin  
Supershows Midway open
- 1:00 p.m. to 10:00 p.m. - Viewing of exhibits in Main Hall
- 4:00 p.m. - Reptile Show at beach area
- 6:00 p.m. to 12 Midnight - Beer Garden open
- 7:00 p.m. to 10:00 p.m. - At Grandstand:  
Opening Ceremonies  
Opening Performers & Comic MC  
Mark Ekins & Band

### Saturday, July 22/06

- 9:00 a.m. - Light Horse Show at Grandstand
- 9:00 a.m. - Pigeon Show at Dining Hall
- 10:00 a.m. to 8:00 p.m. - Education Building open
- 10:00 a.m. to 10:00 p.m. - Viewing of exhibits in Main Hall
- 10:00 a.m. to 10:00 p.m. - Conklin Supershows Midway
- 10:30 a.m. - Sheep Show at the barns
- 12 Noon - Scent-R-Stage Dog Show at  
Grandstand
- 12 Noon to Midnight - Beer Garden open
- 12:30 p.m. - Dairy Show at the barns
- 12:30 p.m. - Beef Show at the barns
- 2:00 p.m. - Reptile Show at Beach
- 2:00 p.m. & 4:00 p.m. - Scent-R-Stage Dog Show
- 4:30 p.m. - Chili Cook-Off in Main Hall
- 6:00 p.m. - Cow Plop Bingo at Grandstand
- 7:30 p.m. - "Showcase of Stars" & Local  
Performers at Grandstand

## CLASS 7: PIGEON SHOW

**CHAIRPERSON:** Rick Osborn (253-4248)

**COMMITTEE:** Dave Delorme, James Cavanagh.

### RULES & REGULATIONS:

See "General Information" and "Rules & Regulations of the N.L.A.S."

**ENTRY FEES:** \$1.00/bird. Entry fees must be sent to Rick Osborne, R.R. #1, Concession 8, Carleton Place, Ont., K7C 3P1 BY JULY 15/06.

**BIRDS** will be received in the Dining Hall at the Fair on Friday, July 21/06 from 6:00 p.m. to 9:00 p.m. and Saturday, July 22/06 before 9:00 a.m.

All entries must REMAIN on site until Sunday, July 23/06 at 3:00 p.m.

### CATEGORIES:

Old Cock (OC), Old Hen (OH), Young Bird (YB).  
Separate entry sheet must be used for each breed.

**PRIZE MONEY** will be paid for Best Of Breed Champion and Reserve Champion.

In Junior Classes, prize money will be paid for Best Of Breed Champion and Reserve Champion.









**Equipment Sales • Parts • Service to All Makes**

6656 County Rd. 29 (formerly Hwy. 15), between Carleton Place & Almonte

Tel: (613) 253-4957

Fax: (613) 253-0125

www.agdealer.com/mp



**Murray & Patsy Lowry**

- 11) **Best Udder:** Doe to be selected from first and second-place winners of the senior division in the Open Show. Milking out will be at the discretion of the judge. Sponsored by **Jack Toshack, Almonte (\$5.00 to each entry).**

PRIZE MONEY FOR SECTIONS 12 & 13: \$5.00 to each entry

12) **Best Doe In Show – Junior**

13) **Best Doe in Show – Senior**

Trophies donated by **Amy Stevens, Almonte**



**Bread 'n Butter**  
BAKERY & FINE FOOD

*You need bread.  
We knead dough.*

73 Little Bridge Street Almonte, 256-7674



**GENERAL STORE**

14 Industrial Dr., Almonte  
256-7463

**ALL-PRO ROOFING**

*ALL YOUR ROOFING NEEDS*

*Free Estimates - 12-Year Guarantee*

**BEST RATES IN TOWN**

CALL "MARK" - CELL PHONE

**613-255-3645**

**Sunday, July 23/06**

9:00 a.m.

9:00 a.m.

10:00 a.m. to 4:30 p.m.

10:00 a.m. to 4:00 p.m.

10:00 a.m. to 6:00 p.m.

12 Noon to 4:00 p.m.

12 Noon

2:00 p.m.

4:00 p.m.

4:30 p.m. to 5:30 p.m.

- Heavy Horse Show at Grandstand
- Pigeon Show in Dining Hall
- Viewing exhibits in Main Hall
- Education building open
- Conklin Supershows Midway
- Beer Garden open
- Sanctioned Goat Show in barns
- Reptile Show at the beach
- Lucky Draw, Homecraft Draw and Children's Bicycle Draw at Grandstand
- Removal of exhibits from Hall.

# Almonte Fair's 150th Anniversary

2008

**IF ANYONE HAS IDEAS FOR THIS  
CELEBRATION, PLEASE  
COMPLETE THE APPROPRIATE  
FORM AND DEPOSIT IN THE  
DESIGNATED AREA IN THE MAIN  
HALL AT FAIR TIME.**

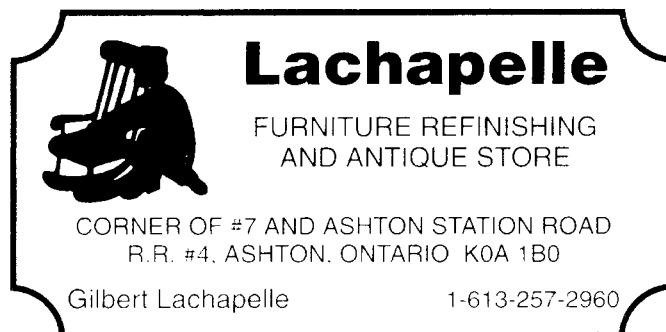
## ALMONTE FAIR FAMILY SPECIAL

Sponsored by **John Stewart, Pakenham,**  
in memory of Elsa & Art Stewart

The purpose of this award is to encourage families to work together to achieve excellence in exhibiting at Agricultural Fairs and to recognize their efforts.

A prize of \$100.00 will be presented to the family group winning the highest number of points at the annual fall Fair.

1. Family group shall be two or more persons living in the same household (father, mother & children living at home) **and must include at least one son or daughter.**
2. For every class in the official prize list, points will be accumulated in the following manner:  
3 points shall be given for a 1st prize  
2 points shall be given for a 2nd prize  
1 point shall be given for a 3rd prize  
5 points shall be given for each class in which a family exhibits.
3. Each family shall be responsible for recording its own winnings on a tally sheet available from the NLAS office at the Fair. The sheet must be returned to the Fair Office by 6:00 p.m. on Sunday, July 23/06 so that computation of points can take place.
4. In the event of tie points, the winner shall be the family with the greater number of first prizes. In the event of a dispute, the decision of the Directors shall be final.
5. The \$100.00 cheque will be issued to the winning family together with other prize money won by that family.



**Junior Division:** The Junior Division consists of Does under the age of 24 months that are not in milk and have never freshened.

### PRIZE MONEY - Sections 1 to 7:

1st - \$20, 2nd - \$18, 3rd - \$16, 4th - \$14, 5th - \$12

### SECTIONS:

- 1) **Junior Kid:** 6 months of age and under.
- 2) **Senior Kid:** 7 months to 11 months.
- 3) **Dry Yearling:** 12 months to 24 months.  
Trophy donated by **Amy Stevens, Almonte**  
JUNIOR CHAMPION: Ribbon  
RESERVE JUNIOR CHAMPION: Ribbon

**Senior Division:** The Senior Division consists of Does that have freshened and/or are in milk.

- 4) **Yearling Milkers** (12 to 24 months), first freshening.
- 5) **Two-year old milkers.**
- 6) **Three to Four- Year old milkers**
- 7) **Five Years and over.**  
Sponsored in part by **Wildrose Country Homestead,**  
Clayton (home of the meat goat)

SENIOR CHAMPION: Ribbon  
RESERVE SENIOR CHAMPION: Ribbon  
GRAND CHAMPION: Ribbon  
RESERVE GRAND CHAMPION: Ribbon

### SPECIAL CLASSES:

#### PRIZE MONEY FOR SECTIONS 8, 9 & 10:

1st - \$20, 2nd - \$18, 3rd - \$16

- 8) **Best Interbreed Dairy Herd:** Four Does in milk owned and bred by the same exhibitor.
- 9) **Mother & Daughter:** Any age, owned by exhibitor.  
Doe in Milk and one daughter, not necessarily in milk.
- 10) **Get of Sire:** Three Does sired by the same buck, at least one of which must be in milk.

## **CLASS 6: GOAT SHOW**

**Chairperson:** Amy Stevens (256-9800)

### **RULE & REGULATIONS**

See "GENERAL INFORMATION" and "Rules & Regulations of NLAS".

Additional rules for this Class are as follows:

- 1) All goats must be in their pens on the grounds by 11:00 a.m. in order that tattoos and registration certificates may be checked.
- 2) There will be a vet check at 11:00 a.m.
- 3) Judging to commence at 12 Noon a.m. Sunday, July 23/06.
- 4) No entry fee, but 20% of prize money will be retained for 2007.
- 5) As Goat Show is sanctioned by the Canadian Goat Society, its rules shall govern, as well as the Revised Bylaws of N.L.A.S. where applicable.
- 6) Goats must stay on the grounds for the day they are shown, and may be removed after judging is completed.
- 7) All goats being exhibited at the Fair must be accompanied by a CERTIFICATE OF HEALTH of the HERD OF ORIGIN, issued by a practicing veterinarian, or a Health of Animals veterinarian, within 60 days of show date of the Fair.
- 8) All goats must be registered with the Canadian Goat Society. Original registration certificate ONLY is acceptable for animals over the age of SIX MONTHS, and must be shown to the Directors in charge by all exhibitors before the start of the show. Base date for calculating the age of the animal to be shown is July 23, 2006 - the date the animal is to be judged.
- 9) There will be no pre-show milkout. A doe with a hard, distended udder will be disqualified at the discretion of the judge.
- 10) All animals shown in the Special Class MUST have been shown in the regular class.
- 11) Exhibitors are requested to be neatly and appropriately attired when showing their animals in the ring.
- 12) Gate reimbursement with prize money up to \$10.00 per herd.

### **BREEDS ARE TO BE SHOWN SEPARATELY:**

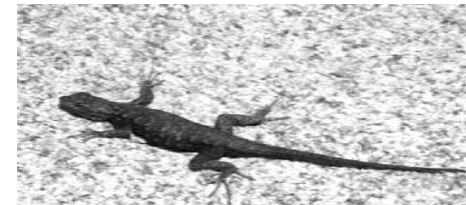
- 1 - Alpine, 2 - Saanen, 3 - Toggenburg,
- 4 - Any Other Purebreed (Nubian, La Mancha)

## **REPTILE SHOW**

**Friday, July 21<sup>st</sup>** at 4:00 p.m.,

**Saturday and Sunday, July 22 & 23** at 2:00 p.m.

Presentation of various reptiles for one hour, then "hands-on" learning for one hour. Look for special Reptile Tent near the beach.



## **SCENT-R-STAGE**

**SATURDAY, JULY 22, 2006**

**12 Noon, 2:00 p.m. and 4:00 p.m.**

**at Grandstand**

**A demonstration of obedience training choreographed to lively music, then various elements of training performed "off-leash", a few "party tricks" and an interactive demonstration of how dogs are trained for search and scent work. After demonstrations, time for visitors to meet and greet dogs and ask questions of the handlers (all volunteers).**



## N.L.A.S. 2006 LUCKY DRAW PRIZES

TICKETS \$2.00 EACH

### PLACE TICKET STUB IN PRIZE BOX OF YOUR CHOICE

1st Prize: **ONE BABY BEEF**  
Donated by **Keith McNeely, Bert & Marion Timmins & N.L.A.S.**

2nd Prize: **ONE MARKET HOG**  
Donated by **Ottawa/Lanark-Carleton Pork Producers**

3<sup>rd</sup> Prize: **ONE MARKET LAMB**  
Donated by **District 9, Ontario Sheep Marketing Agency**

**NOTE:** Above prizes to be cut and wrapped to winner's specifications by **M. Scheel's Packers, Pakenham**

4th Prize: **\$125.00 GIFT CERTIFICATE**  
Donated by **Levi Home Hardware, Almonte**

5th Prize: **\$100.00 GIFT CERTIFICATE**  
Donated by **Patrice's "Your Independent Grocer", Almonte**

6th Prize: **One Introductory/Discovery Flight with Carp Flying Academy at Carp Airport.**

7<sup>th</sup> Prize: **\$100.00 Canadian dollar bill**

**NOTE:** Lucky Draw Tickets will be drawn at approx. 4:00 p.m. on Sunday, July 23/06.  
Winners need not be in attendance to win prizes.  
All prizes will be awarded as listed - no substitutions or exchanges for cash

5. **Get of Sire** (born property of exhibitor): A group of 3 animals (1st pair of temporary incisors must be in place) by the same sire. Both sexes may be represented. (Animals may or may not have been shown in previous sections.)
6. **Breeder's Flock** (bred and owned by the exhibitor). A group of 4 animals. Both sexes to be represented. Each animal in the group must have been exhibited in one of the preceding sections. All animals in a group to be of one breed.

**PREMIER BREEDER:** For most points accumulated in Sections 2 to 6. Trophy donated by **Canadian Co-Operative Wool Growers in Carleton Place, Ontario.**

### COMMERCIAL SHEEP:

**PRIZE MONEY:** (Sections 7 to 10)

1st - \$18, 2nd - \$16.20, 3rd - \$13.50, 4th - \$10.80, 5th - \$9.

7. **Ewe Lamb** - less than 1 year old.

8. **Ewe Shearling** - 1 year old.

9. **Ewe** - 2 years or older that raised a lamb in 2005

10. **Market lamb** - market weight.

Trophy donated by **Almonte Country Depot**

### LAMB SHOW

Saturday, July 23/05 at 9:30 a.m. in the Pig Barn.

**NOTE:** Not more than 1 entry in each section by an exhibitor.

Exhibitors **MUST RESIDE** in Lanark County OR be a 4-H Member.

### PRIZE MONEY FOR SECTIONS 11 & 12

1st - \$22, 2nd - \$18, 3rd - \$15, 4th - \$13, 5th - \$11.

11. **Best Single Lamb**, market weight.

12. **Best Pen of 3 Lambs**, market weight.

### SPECIAL CLASSES:

#### PRIZE MONEY FOR SECTIONS 13 TO 15:

1st - \$18, 2nd - \$16, 3rd - \$13, 4th - \$10, 5th - \$9.

#### Ribbons to all other participants.

13. **Novice Showmanship** - any age, first year showing.

14. **Junior Showmanship** - children 12 and under. Lambs born after March 31, 2005 are eligible.

Sponsored by **Donna & Ross Creighton, Almonte**

15. **Senior Showmanship** - children 13 and over. Lambs born before March 31/04 are eligible.

Trophy donated by **Arnold Polk Family, Pakenham**

## CLASS 5: SHEEP SHOW

CHAIRPERSON: Ross Creighton (256-4752)

**RULES & REGULATIONS:** See Sections “GENERAL INFORMATION” and “RULES & REGULATIONS OF THE N.L.A.S.”. Additional rules are as follows:

1. Entry fee is 20% of prize money.
2. SHOW TIME: Saturday, July 22/06 in PIG BARN at 10.30 a.m.
3. All Sheep and Lambs must be accompanied by a Certificate of Health of the flock of origin, issued by a practicing veterinarian within 60 days of show date.
4. All classes except Leicester and North Country Cheviot must show in short fleece, less than 1” (2.5 cm) staple.
5. Each breed must be shown separately and have at least three (3) exhibitors and at least 12 animals; otherwise only one-half the prize money will be awarded.
6. All purebred exhibits must be owned by and registered in the name of the exhibitor. All exhibits must have completed a 100-day weight.
7. Boxstalls will be available to all exhibitors
8. **Gate reimbursement with prize money up to \$10.00 per herd.**

### **PRIZE MONEY:**

1st - \$22.00, 2nd - \$19.00, 3rd - \$17.00, 4th - \$15.00,  
5th - \$13.00

**BREEDS:** 1 - Suffolk, 2 - Leicester, 3 - Polled Dorset,  
4 - North Country Cheviot, 5 - Any Other Breed

### **SECTIONS FOR EACH BREED:**

1. Ewe yearling (3rd pair of temporary incisors must be in place) born and bred in Canada.
2. Ewe (1st pair of temporary incisors must be in place) born property of the exhibitor.

**CHAMPION EWE:** Ribbon only.

3. Ram yearling (3rd pair of temporary incisors must be in place).
4. Ram (1st pair of temporary incisors must be in place) born property of the exhibitor.

**CHAMPION RAM:** Ribbon only.

## N.L.A.S. HOMECRAFT DIVISION DRAW TICKETS \$2.00 each or 3 FOR \$5.00

### PLACE TICKET STUB IN PRIZE BOX OF YOUR CHOICE

- |                        |   |
|------------------------|---|
| 1 <sup>st</sup> Prize: | <b>HAND-MADE QUILT</b>  |
| 2 <sup>nd</sup> Prize: | <b>HAND-MADE WOODEN HIGHCHAIR</b>   |
| 3 <sup>rd</sup> Prize: | <b>LADIES' NIGHTSHIRT &amp; SPA<br/>CONTAINER</b>                                   |
| 4 <sup>th</sup> Prize: | <b>COOKBOOK: “EAT, SHRINK AND BE MERRY”<br/>(by the authors of “Looney Spoons”)</b> |

Tickets to be drawn at the Almonte Fair at  
approximately 4:00 p.m. on Sunday, July 23/06.

Winners need not be in attendance to win prizes. All prizes will be awarded as listed – no substitutions or exchanges for cash.

### **Special Draw on Sunday, July 23, 2006 @ 4:15 p.m.**

Draw tickets will be issued at the Raffle Ticket Sales Desk to all children between 7 through 13 years of age who pay \$4.00 at the gate to enter the Fair and get their wrist band. Children must print name, address & phone number on a ticket and drop in box at the Raffle Ticket Sales Desk. Deadline to enter is 3:30 p.m. on Sunday, July 23/06. Two tickets will be drawn for two children's bicycles – one donated by **Conklin Supershows** and the second by **Levi Home Hardware Sports Dept.**

## ENTERTAINMENT AT GRANDSTAND

**FRIDAY, JULY 21, 2006**

**7:00 p.m.**

**OPENING CEREMONIES**

**OPENING PERFORMERS AND COMIC M.C.**

**MARK EKINS (recording artist)**

**& BAND**



**SATURDAY, JULY 22, 2006**

**7:30 p.m.**

**“SHOWCASE OF STARS”  
FEATURING LOCAL TALENT  
PLUS SPECIAL ENTERTAINERS**



9. Breeder's Herd: A group of 4 animals bred by the exhibitor with BOTH sexes represented, and must be exhibited in one of Sections 1 to 8. At least one animal must be owned by the exhibitor. Limited to one exhibit per exhibitor.
10. Get of Sire: A group of 3 animals from one sire. At least one animal must be owned by the exhibitor. Both sexes represented.

### SPECIAL CLASSES:

**GRAND CHAMPION BULL:** Ribbon

**RESERVE GRAND CHAMPION BULL:** Ribbon  
(to be judged after Class 4 in each breed)

**GRAND CHAMPION FEMALE:** Ribbon

**RESERVE GRAND CHAMPION FEMALE:** Ribbon  
(to be judged after Class 8 in each breed)

**SUPREME CHAMPION FEMALE** on Saturday,

July 22, 2006 - \$100.00 sponsored by **Mack James & Family**

**CLASS 4** sponsored in part by **The Co-operators Insurance,**  
Upper Lanark County Agencies.



*Residential & Commercial • Fully Insured • Free Estimates*

**Kevin Cooney**

Tel: 256-6708 • Cel: 880-1463 • Fax: 256-8357  
R.R. #2, Almonte, ON K0A 1A0



**KERRY**

**Funeral Homes and Chapels Inc.**

154 Elgin Street  
Almonte, Ontario  
K0A 1A0

61 Lake Ave. West  
Carleton Place, Ontario  
K7C 1L3

613-256-2160 Directors: 613-257-2303

John H. Kerry - Glenn H. Kerry - Stephen L. O'Keefe



## **CLASS 4: BEEF CATTLE**

CHAIRPERSON: James Purdy (256-1665)

### **SHOW DATES:**

**Saturday, July 22/06 at 12:30 p.m... – Hereford, Aberdeen Angus,  
Shorthorn, Simmental and Limousin**

### **RULES & REGULATIONS**

See Sections "GENERAL INFORMATION" and "RULES & REGULATIONS OF THE N.L.A.S."

**NOTE: Beef Show gate reimbursement with prize money will be as follows:**

**\$5.00 for 1 to 3 head shown, \$10.00 for 4 to 6 head, \$15.00 for 7 to 9 head, and \$20.00 for 10+ head**

### **CLASSIFICATION RULES**

1. Each breed must be shown separately and have at least 3 exhibits per breed.
2. Exhibitor may exhibit 2 animals per class in a maximum of 3 classes for Sections 1 to 7. Only 1 exhibit per exhibitor will be accepted in Sections 8 & 9.
3. All animals being shown in single classes must be registered at time of closing date of entries July 22/06 except calves (which must be properly tattooed) in two years and mature cow-calf classes. All animals must be legibly tattooed.

### **PRIZE MONEY:**

1st - \$50, 2nd - \$40, 3rd - \$30, 4th - \$25, 5th - \$20, 6th - \$15,  
7th - \$10, 8th - \$10, 9th - \$10, 10th - \$10.

### **SECTIONS:**

1. Bull calf born on or after Jan. 1/06 - min. of 3 months of age on day of judging. May also show in Sections 9 & 10.
2. Bull yearling - born April 1/05 to Dec. 31/05.
3. Bull yearling - born Jan. 1/05 - March 31/05.
4. Female calf - born on or after Jan. 1/06 - min. of 3 months of age on day of judging. May also show in Sections 9 & 10.
5. Female heifer - born April 1/05 to Dec. 31/05.
6. Female heifer - born Jan. 1/05 to March 31/05.
7. Female born Jan. 1/04 - Dec. 31/04, with her own natural, purebred, tattooed calf at foot. Female and calf will be shown as a unit except that the calf is eligible to be shown as a single animal in Sections 9 and 10.
8. Female born prior to Jan. 1/04 with her own natural, purebred, tattooed calf at foot. Female and calf will be shown as a unit except that the calf is eligible to be shown as a single animal in Sections 9 and 10.

## **COW PLOP BINGO**

Cow Plop Bingo will take place on Saturday, July 22/06 at approximately 6:00 p.m. in front of the Grandstand.

To purchase a Bingo Square at \$5 each, contact Audrey Kostaszek at 257-5050. Names cannot be placed on a square in advance of payment. The grid will also be available at the Fair Office starting Wednesday, July 12<sup>th</sup> (see General Information on Page 6) until Saturday, July 22/06 at 5:00 p.m.

Each entry on a square must include name and telephone number – and the winner will receive \$300.00 after the cow plops on the appropriate square



## **CAR BINGO**

**Every Wednesday evening in August, 2006, the North Lanark Agricultural Society holds "OUTDOOR CAR BINGO" – where everyone can enjoy the mild summer evenings and play bingo at the same time.**

**Bingo games start at 7:00 p.m. and refreshments are available for purchase during the breaks.**

**For further information call Debby Wicker at  
613-253-3465**

## COMMUNITY DISPLAYS

### A New Way To Promote Your Organization

**LIMITED SPACES – APPLY TO OFFICE AT FAIR TIME (256-1819) OR TO  
SECRETARY PRIOR TO FAIR AT 257-5050 – OR FAX 257-5051.  
SPACES WILL BE ALLOCATED ON A  
“FIRST-COME, FIRST-SERVE” BASIS.**

1. Open to any organized group (Church, W.I., Youth Group, etc.).  
One entry from each organization.
2. No entry fee and no judging – so no prize money to be paid out.
3. Must work with fair theme: **“Ewe Ain’t Seen Nothin’ Yet”**
4. Space is approx. 4’ x 4’ upstairs in Main Hall.
5. Each exhibit shall include the Fair theme on a freestanding display board with exhibitor’s name somewhere in display space.
6. No food. Exhibit must be in good taste.
7. Entries to be made in the name of the organization exhibiting with a contact name, and the display to be arranged by them.
8. Setup is any time Thursday, July 20/06, from 3:00 p.m. to 10:00 p.m. and must be removed on Sunday, July 23/06 from 4:30 p.m. to 5:30 p.m. **EXHIBIT MUST REMAIN IN HALL FOR ENTIRE FAIR.**
9. All exhibits in Hall are left at owners(s) risk.

Any questions, call Dianna Lachapelle at 613-257-2960.

TEL: 256-1956

**COADY’S CAR CARE**  
**Mechanical Repairs-Domestic & Most Imports**  
 COADY’S-WHERE WE CARE ABOUT YOUR CAR

BOX 1017  
 30 MILL STREET  
 ALMONTE, ONT, K0A 1A0      **PROP. DOUG COADY**

#### Class 8: BREEDER’S HERD:

Bred by exhibitor, group of 3 animals – 1 exhibit per exhibitor. Exhibitor must have bred all 3 animals and own at least 2. The registration certificate for each respective animal must show the exhibitor as “breeder” and as “owner” in both cases either as an individual or in partnership. Exhibitor may be a “joint owner” of an animal and/or the “joint breeder” of an animal. Note the exception where one animal is owned by another exhibitor.

The DAIRY SHOW is sponsored by the following:

**Almonte Country Depot**  
**M&P Farm Enterprises, Almonte**  
**Ross Agristore, Ashton**  
**Wm. J. Stewart Transport, Almonte**  
**Carmel Roy Carleton Place**

**Lanark County Championship Holstein Show**  
**Almonte Fairgrounds**  
**Friday, September 8, 2006 at 11:00 a.m.**

Almonte 4-H Championship 4-H Show:  
 Almonte Fairgrounds Saturday, September 9, 2006 at 9:30 a.m.

Lanark County Championship 4-H Show  
 Almonte Fairgrounds Saturday, September 9, 2006  
 at 1:00 p.m.

## “NEVER CRITICIZE A FARMER WITH YOUR MOUTH FULL”

## NOVICE CLASS

1. No entry fee.
2. Open to all children between ages of 7 & 9 inclusive as of January 1, 2006 and not enrolled in 4-H Program. The calf must not be a 4-H Member's project, but must be a Holstein calf.
3. Calf must be born after March 1, 2006.
4. Calf to be judged 50% for calf and 50% for enthusiasm.
5. Entries to be sent to **Brad Lowry, R.R. #3, Almonte, K0A 1A before July 7, 2006.**
6. Time of class approximately 12:30 p.m. on Saturday, July 22, 2006

## JUNIOR HOLSTEIN SHOW

DATE: Saturday, July 22/06 at 12:30 p.m.

NOTE: All animals on the grounds by 11:00 a.m.

PRIZE MONEY	POINTS
1 <sup>st</sup>	\$40
2 <sup>nd</sup>	\$35
3 <sup>rd</sup>	\$30
4 <sup>th</sup>	\$25
5 <sup>th</sup>	\$20
6 <sup>th</sup>	\$15
7 <sup>th</sup>	\$10
8 <sup>th</sup>	\$10
9 <sup>th</sup>	\$5
10 <sup>th</sup>	\$5

### SECTIONS:

Class 1: FEMALE Junior Calf born March 1/06 – May 31/06

Class 2: FEMALE Intermediate Calf born Dec. 1/05 – Feb. 28/06

Class 3: FEMALE Senior Calf born Sept. 1/05 – Nov. 30/05.

Class 4: FEMALE Summer Yearling born June 1/05 – Aug. 31/05

Class 5: FEMALE Junior Yearling born March 1/05 – May 31/05

Sponsored by **Almonte Veterinary Services**

Class 6: FEMALE Intermediate Yearling born Dec. 1/04 – Feb. 28/05

Class 7: FEMALE Senior Yearling born Sept. 1/04 – Nov. 30/04

### CHAMPION & RESERVE JUNIOR FEMALE --RIBBONS.

## **RULES & REGULATIONS OF THE NORTH LANARK AGRICULTURAL SOCIETY**

1. No entry fee will be charged to NEW Main Hall exhibitors, but exhibitors are required to so indicate on entry forms. The Society reserves the right to refuse any entry or membership. All entries must be in the hands of the Secretary by notice as given under "General Information".

2. The Main Exhibit Hall will be open from 3:00 p.m. to 10:00 p.m. on Thursday, July 20, 2006 and all exhibits MUST BE in the Main Hall by 10:00 p.m. that day. All exhibits MUST BE REMOVED BETWEEN 4:30 p.m. and 5:30 p.m. on SUNDAY, JULY 23, 2006. NLAS will not be responsible for items not removed on Sunday, July 23/06.

3. One exhibit cannot be entered in more than one section. No exhibitor shall be allowed to make more than one entry in any one section of a class. No more than one entry in any one section of a class from the same household is permitted (except for Classes 17, 18 & 19) and any junior section of a class. Exhibits must be produced by the exhibitor or a member of their household. Quantities specified must be shown.

**4. A Judge shall NOT award two first-place awards, or two second-place awards, etc., in any section of any class.**

5. When making settlement, 15% of all awards totaling over \$30.00 will be retained as an entry fee (of which \$5.00 will be for a membership for the following year).

### **OR**

SEE SPECIAL RULES GOVERNING EACH CLASS IN PRIZE LIST.

6. To be eligible for competition, whether singly or in groups (except where otherwise specified), all animals and articles exhibited must be the bonafide property of the exhibitor and all exhibits entered for competition must be owned by the exhibitor for at least 15 days at time of making entry.

The right is reserved to reject or eliminate any entry or exhibit. Entries for purebred livestock will be accepted only on the understanding that the animals are registered with the recognized breeding association in the name of the exhibitor by the date of closing entries. Each exhibitor must have on hand, at the time of the exhibition, the certificates of registration for each purebred animal entered. These certificates and the animals entered may be examined for identification purposes by the members of the committee.

7. All applications for entries must be made on the printed forms supplied by the Society, filled in with all the information asked for and signed by the intending exhibitor. If names and addresses are not complete, prize money will not be mailed. Entries of purebred livestock must give registered name, number, and date of birth, except in the cases of animals under one year of age; in such cases the name and number of the Sire and Dam must be given, and the name and number of the Sire must be given in all cases of Grade Animals.

8. THE BOARD OF DIRECTORS REQUESTS THAT ALL LIVESTOCK EXHIBITORS SEND PROOF OF LIABILITY INSURANCE FOR ALL SHOW ANIMALS WITH YOUR ENTRY FORMS. THIS PROOF MAY BE A PHOTOCOPY OF YOUR POLICY OR A LETTER FROM YOUR INSURANCE COMPANY. WE REQUEST YOUR CO-OPERATION IN THIS MATTER.

9. For DAIRY and BEEF cattle - bulls must have rings in their noses or be otherwise properly secured to prevent accidents. All animals must be shown in the ring as required by the Directors and Judges. Also, animals must be shown in parade; otherwise money will not be paid. Owners or attendants must be prepared to bring animals into the ring when called for, or forfeit claim to any premiums awarded to them.

10. ALL HEAVY HORSE and LIGHT HORSE exhibitors must provide a current NEGATIVE COGGINS TEST together with the entry forms.

11. All grain, roots, fruits, vegetables and dairy products must be grown, raised or manufactured by the exhibitor during the current year and must be received under the same conditions as in Rule No. 6.

12. No exhibit may be removed from the Hall or Grounds during the Fair, except on written orders of the President or the Chairperson of the Committee in charge.
13. No prize ribbons or cards may be displayed in connection with exhibits before judging is done.
14. No animal will be allowed to compete for more than a single premium, except for specials, stake classes and team classes.
15. Every exhibit entered for competition must remain in the class in which it is entered throughout the Fair, except where otherwise provided for in the Prize List.
16. No person shall act as Judge for awarding premiums in the class in which he/she is a competitor.
17. No horse shall receive a premium which the Judge considers to be possessed of hereditary unsoundness.
18. Any person who shall impose or attempt to impose by false representation, or in any other way, in order to obtain a premium or any other advantage, upon complaint being made before the Directors or a quorum thereof, and fully substantiated, shall be deprived of all prizes awarded to him, her or them, at the exhibition, and any prize money reverts to the Society.
19. Any person who shall attempt to interfere with the Judges, while in the discharge of their duties, or use any contemptuous or abusive language to any Judge, in consequence of any award made by him, shall forfeit his or her right to any premium to which he/she might otherwise be entitled, and Judges are requested to report any such instances.
20. Exhibitors may be required by the Directors to make a statutory declaration that the articles exhibited by them are exhibited in accordance with the Rules & Regulations of the Society, and in case any exhibitor refuses to make such a declaration on being requested, all premiums awarded to him, her or them, shall be forfeited.
21. Protests must be made in writing and must give definitely and concisely the grounds of protest. All protests must be made before 6:00 p.m. the day the award was made, after which no protest will, on any account, be received. Any party making a protest must deposit with the Secretary/Treasurer the sum of \$5.00 as a guarantee of good faith, which will be returned to him/her upon his/her proving the protest; otherwise it will be retained by the Society. The Directors will decide in all such cases, and their decision shall be final.
22. In addition to the stated premiums offered for articles enumerated in the Prize List, the Judge shall have power to award discretionary premiums for such animals or articles not enumerated, as they may consider worthy. The Judges may also distinguish such animals or articles as they consider worthy of notice, but which have not received prizes, with the words "Commended or Highly Commended" but shall not entitle the owner to any money premium.
23. Firms and co-partnerships entering exhibits for competition must be in existence for one month at time of making entry and, in all cases, must be bonafide. Affidavits of age of firms may be required by the committee.
24. The Society will take every possible precaution under the circumstances to ensure the safety of articles sent to the exhibition, yet they wish it to be "Distinctly Understood" that the owners themselves must take the risk of exhibiting them, and should any article be lost or stolen, the Directors will give all the assistance in their power toward recovering same, but will not make any payment for the value thereof.
25. Each exhibitor will be solely responsible for any loss, injury or damage occasioned by or arising from any animal or article exhibited by him/her, and shall indemnify the Society against all legal or other proceedings in regard thereto.
26. The Society will not be liable for any loss to an exhibitor occasioned by fire, accident, condition of structure or otherwise, or the negligence of other exhibitors or officials of the Society.
27. In the absence of any competition in any section or if the stock or article exhibited be of an inferior quality, the Judge or Judges will award only such premiums as they consider the stock or articles merit. They will exercise their discretion as to whether they will award the

oedema, erythema, sensitivity, reddening, firmness, warmth or exfoliation of the skin, but excluding general oedema associated with parturition or mastitis, or a sore in the area where the large blood vessels enter the udder.

- (2) Any animal entered by an exhibitor who, or whose servants, agents or servants, persons acting on behalf of the exhibitor, fails to co-operate in the inspections provided for under paragraphs 3 or 4.
- (b) The inspector's determination pursuant to sub- paragraph (a) (1) is subject to an appeal by the exhibitor to the appeal committee appointed by the show for the purpose. Any such appeal must be made by notice in writing delivered to the show management within one hour of notification of the inspector's determination.
- 6) No entry shall be removed from the Fair buildings prior to being exhibited, for any purpose, except upon the express permission of the General Manager and under supervision while absent from permission shall be disqualified.

### **PART III:**

All exhibitors and their filters, agents or other representatives agree to abide by the following procedures:

- 1) Exhibitors, agents, employees or other person acting on behalf of an exhibitor, shall deliver to an inspector upon request any hypodermic syringe, needle or other device, swabs, cloths or other material, or samples of any medicine, preparation or substance, whether in liquid or other form, for the purposes of laboratory analysis.
- 2) All entries and personal property of the exhibitors, their servants and agents and persons acting on behalf of exhibitors, are subject to inspection by inspectors authorized by a show. All such persons shall co-operate with the inspectors and shall provide all such information in connection with such inspections and shall provide access to the animal and all information reasonably required by inspectors in connection with such inspections and shall provide, if so requested, samples of urine, milk, blood, or any other body fluids suitable for analysis.
- 3) Exhibitors shall remove any udder supports, blankets or other objects limiting the ability of the inspector to undertake a thorough inspection.
- 4) The exhibitor agrees to act at all times in accordance with the Rules and Regulations for Showing and the Standard procedures, and will accept any final decision made thereunder.

In keeping with the basic philosophy of the Canadian Dairy Breeds, ethics are an individual responsibility. However it should be understood that violators are subject to the disciplinary provisions of their Breed Association's Rules & Regulations.

- 4) Minimizing the effects of crampiness or lameness by feeding or injecting drugs.
- 5) Surgery of any kind performed to change the natural contour or appearance of the animal's body, hide or hair. Not included is the removal of warts, teats, and horns, clipping and dressing of hair and trimming of hooves.
- 6) Insertion of foreign material under the skin.
- 7) Criticizing or interfering with the judge, show management or other exhibitors while in the show ring, or other conduct detrimental to the breed show.
- 8) Filling an animal's rumen unnaturally with liquid (tubing).
- 9) Administering epidural anesthesia (blocking tails), or applying any irritant, either externally or internally to the perineal area.

## PART II:

- 1) The provisions of this part apply to entries of a breed regulated by a breed association which has adopted this part.
- 2) No exhibitor and no agent, employee or other person acting on behalf of an exhibitor, shall have in his or her possession or control:
  - (a) any hypodermic syringe, needle or other device;
  - (b) swabs, cloths or other material, or
  - (c) any medicine, preparation or substances; whether in liquid or any other form intended for use in contravention of the Code of Ethics.
- 3) In addition to the requirements of the General Rules & Regulations, all entries and the personal property of all exhibitors, their servants and agents and persons acting on behalf of the exhibitors, are subject to inspection at all times by inspectors authorized by the General Manager. All such persons shall co-operate with the inspectors and shall provide all such information in connection with inspections, and shall provide, if so requested, samples of urine and blood suitable for analysis. They shall also remove any udder supports, blankets or other objects limiting the ability of the inspector to undertake a thorough inspection of the animals. In particular, the inspectors shall be informed of the nature of any medicine, treatment or substance administered to any entry and the reasons therefore. Inspections under this paragraph may be carried out at any time while the animal is at the show and elsewhere in the period ending 30 days after the termination of the show between the hours of 6:00 a.m. and 8:00 p.m.
- 4) Any inspector may at any time require the delivery to him of any hypodermic syringe, needle or other device, swabs, cloths or other material; or samples of any medicine, preparation or substance whether in liquid or other form in the possession or control of the exhibitor, his servants, agents, or persons acting on behalf of the exhibitor, for the purposes of laboratory analysis.
- 5) (a) Subject to the provisions of sub-paragraph (b), the following entries are disqualified and shall not participate further in the Fair in which an entry is disqualified:
  - (1) Any animal determined by an inspector (who is also a veterinarian) to have any udder manifesting any of the following: localized swelling,

1st, 2nd, or any premium.

28. All kinds of gambling, theatrical, circus or mountebank performance, exhibition or shows, and all huxtering or trafficking in fruits, goods, wares or merchandise, are hereby prohibited on the Grounds of the Society, "THREE HUNDRED YARDS" thereof during the days of the holding of the annual exhibition, and any person who, after due notice, violates this rule, shall be liable to be removed by the Officers or Constables of the Society and be subject to the penalty prescribed in Section 30 of the Act relative to agricultural societies. It is not lawful to carry on horse racing during the days appointed for the holding of the annual exhibition of the Society, within FIVE MILES of the Society's Grounds (See SECTION 24 of the ACT RELATING TO AGRICULTURAL SOCIETIES).

29. The Board of Directors reserves the right to interpret any rule or regulation and their decision shall be final.

30. Should any dispute or question arise not provided for in the Rules & Regulations, the decision of the Board of Directors shall be final.

31. Non-compliance with any of these rules or the general rules of the Society on the part of the exhibitor, or his employees, shall incur the forfeiture of all privileges and premiums.

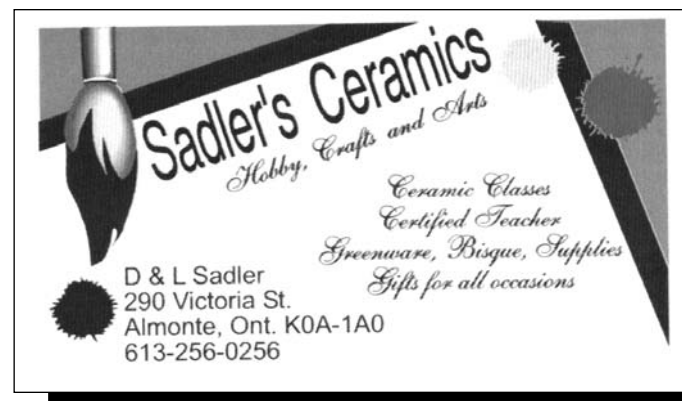
32. All protests and matters of dispute shall be decided by the Committee in charge and confirmed by the Board of Directors, and their decision shall be final.

33. If receipts are insufficient to meet the Prize List in full, the prizes will be paid pro rata as funds permit.

## 34. PASSES:

**ALL LIVESTOCK EXHIBITORS MUST PAY THE ENTRY FEE AT THE GATE. REIMBURSEMENT WILL BE PAID WHEN PRIZE MONEY CHEQUES ISSUED, ACCORDING TO NUMBER OF HEAD EXHIBITED** (see note in each Livestock Class). **NO MEMBER PASSES** will be issued for the entire weekend - Society members will be issued passes only for the day they work at the Fair.

**CASUAL LABOUR PASSES** - all workers pay to enter at the gate and receive reimbursement from the head of the committee they are reporting to.



## CLASS 1: HEAVY HORSE DEPARTMENT

CHAIRPERSON: Jim Tims (256-2056)

COMMITTEE: Mary Turner, Sid Mohr, Joy Drynan, Sharron O'Hara, Hugh Meehan, Don Sadler, Al Barratt, Crystal Larose, James Purdy

### JUDGES:

For Percheron, Commercial Line Classes and Draft & Commercial Hitches: Roger Rice, R.R. #2, Staffa, Ontario.

For Clydesdale and Belgian Line Classes and Miniature

Hitches: Bob Robertson, R.R. #1, Listowel, Ontario.

ANNOUNCER: Barry Birchall of Nepean, Ontario

MUSIC: Organ Music by Bernie Costello of Almonte, Ontario

### RULES & REGULATIONS:

1. Heavy Horses will be judged on Sunday, July 23, 2006 commencing at 9:00 a.m. SHARP.
2. Entry Fees: 15% of prize money.
3. **NOTE:** See the following sections for detailed information:  
"GENERAL INFORMATION" AND "RULES & REGULATIONS OF N.L.A.S.".  
**ALSO NOTE: Heavy Horse gate reimbursement with prize money will be as follows: \$5.00 for 1 to 2 horses shown, \$10 for 3 to 4 horses shown, \$20.00 for 4+ horses shown to a maximum of \$20.00.**
4. Stalls: Limited number available – no fee.
5. To be eligible, each breed must be shown separately.
6. **NOTE:** All classes from 8 to 20 in draft and commercial to use two capable drivers, **not children.**
7. No more than two (2) entries per Stable in Hitch Classes.

All exhibits MUST BE OWNED BY & REGISTERED IN THE NAME OF THE EXHIBITOR. No animal may show in more than one class.

### PRIZE MONEY FOR CLASS 1: Sections 1 to 10

1st - \$50	6th - \$15
2nd - \$40	7th - \$10
3rd - \$30	8th - \$10
4th - \$25	9th - \$10
5th - \$20	10th - \$10

## CLASS 3: DAIRY CATTLE

Chairperson: Glen Syme (257-1467)

Committee: Diana Nanne, Ross Goodman, Brad Lowry, Earle Snedden, Bert Thom

SHOW DATE: Saturday, July 22/06 at 12:30 p.m.

BREEDS: Dairy

### RULES & REGULATIONS:

See sections "GENERAL INFORMATION" and "RULES & REGULATIONS OF N.L.A.S."

NOTE: Dairy Show gate reimbursement with prize money will be as follows:

\$5.00 for 1 to 3 head shown, \$10.00 for 4 to 6 head shown, \$15.00 for 7 to 9 head shown, and \$20.00 for 10+ head shown.

The following rules also apply:

- 1) A fee of 15% will be deducted from any prize money awarded to all registered cattle.
- 2) The maximum total eligible exhibits from a breeding unit is 10 head plus 2.  
NOTE: There is no restriction on entries per class. The best 10 count for points.
- 3) Each breed must be shown separately and have at least 3 exhibitors and 24 exhibits per breed - otherwise only half the prize money will be paid.
- 4) All Holstein animals must have a plastic NLID tag (Dairy EZ1R Regular or transition) or RFID in order to be exhibited. **NO EXCEPTIONS!!**
- 5) All exhibitors must sign the "mandatory exhibitor agreement" form (enclosed and returned with entries regarding compliance to the Code of Ethics prior to exhibiting animal or animals at an Ontario Holstein Branch Sanctioned Show. **NO EXCEPTIONS!**
- 6) Animals can be shown on a signed transfer of ownership which will be submitted immediately following the show by the Holstein Canada Fieldman

**VET ON CALL: Almonte Veterinary Services, 256-3443**

**SPECIAL NOTE:** No animal entered in any of the Dairy Show Classes will be permitted on the grounds prior to 6:00 a.m. on the day before the show.

### CODE OF ETHICS FOR DAIRY CATTLE EXHIBITORS

#### PART 1:

The following practices and procedures are considered unacceptable and defined as being unethical in the show ring of registered dairy cattle.

- 1) Misrepresenting the age of an animal for the class in which it is being shown.
- 2) Balancing the udder by means other than by leaving naturally produced milk in any or all quarters, or roping udders and the use of objects to physically improve definition of the median suspensory ligament.
- 3) Treating or massaging any part of the animal's body, particularly the udder, internally or externally, with an irritant, counter-irritant, or other substances to temporarily improve conformation or produce unnatural animation.

13. **Junior Ride-A-Two Bareback** – no entry fee.  
Bring your toonie and give it to the ring steward, and you will receive a paper. Rider who keeps their paper the longest wins
14. **Senior Five-A-Five Bareback** – no entry fee. Bring a \$5 bill to the ring steward and you will receive a paper. Rider who keeps their paper the longest wins.

### **LUNCH BREAK**

15. **Jr. Costume Class** – may use lead line.  
Sponsored by **Donaldson Quarter Horses**, Almonte
16. **Junior Hunter over fences** (jump 2 feet)  
Sponsored by **Valley Veterinary Clinic**, Carleton Place
17. **Senior Hunter over fences** (jump 2 feet 6 inches)  
Sponsored by **Keith & Shelley Lowry**, Almonte
18. **Junior Equitation over fences** (jumps 2 feet)  
Sponsored by **Leeview Farm**, Carleton Place
19. **Senior Equitation over fences** (jumps 2 feet 6 inches)  
Sponsored by **Ross Agristore**, Ashton)
20. **Open Pleasure Driving, Pony**  
Sponsored by **Judy Wellington**
21. **Open Pleasure Driving, Horse.**  
Sponsored by **Eileen & Bob Sadler**, Pakenham
22. **Junior Reinsmanship** - driving ability to be judged.  
Sponsored by **Pat Wolfe Log Building School**, Middleville
23. **Senior Reinsmanship** – driving ability to be judged.  
Sponsored by **Earl Sadler**, Pakenham

### **10 MINUTE BREAK**

24. **Junior Western Pleasure**
25. **Senior Western Pleasure**  
Sections 24 & 25 sponsored by **Canadian Co-Operative Wool Growers**, Carleton Place
26. **Junior Western Horsemanship.**  
Sponsored by **RKT Computer Solution Center**, Carleton Place
27. **Senior Western Horsemanship.**  
Sponsored by **Scotty's Auto Center**, Almonte
28. **Open Pair Class** – English or Western – walk trot only.  
One entry fee per pair.  
Sponsored by **Carnivic Lodge Bed & Breakfast**, Pakenham

**THANK-YOU TO ALL OUR SPONSORS, MANY OF WHOM HAVE BEEN SPONSORING OUR SHOW YEAR AFTER YEAR!!**

### **SECTIONS:**

1. **FILLY OR COLT**, foaled in 2006.
- 1(S) **CLYDESDALE SPECIAL**: A Clydesdale filly or colt of the current year sired by one of the following nominated stallions:
  1. Ainville Freelance
  2. Greenleaf Catalyst
  3. Elshmarg Silver Chief
  4. McMillan's King
  5. North River Lance

### **PRIZE MONEY FOR SECTION 1(S):**

1st - \$50, 2nd - \$40, 3<sup>rd</sup> and out - \$30..

Sponsored in part by the **Eastern Regional Clydesdale Assn.** The horses shown in this class must be sired by a nominated stallion from Eastern Ontario and Western Quebec with the dividing line East of Highway 37.

2. **FILLY** foaled in 2005.
3. **FILLY** foaled in 2004.
4. **FILLY** foaled in 2003.
5. **BROOD MARE**: Mare that shows evidence of being in foal or has raised a foal during the current year. The exhibitor is required to show the mare with foal at foot or registration certificate of the foal must be provided if the foal is not hown.
6. **YELD MARE**: Four years and over.

CLASS 2A: **CHAMPION CLYDESDALE MARE**: Trophy donated by **Andy Sadler**, Pakenham

CLASS 2B: **CHAMPION BELGIAN MARE**: Trophy donated by the **Currie Families of Clearview Lumber Products**, Franktown

CLASS 2C: **CHAMPION PERCHERON MARE**: Trophy donated by **Bert & Marion Timmins** Almonte

7. **STALLION** foaled in 2005
8. **STALLION** foaled in 2004
9. **STALLION** foaled before January 1, 2004.
- 9(a). **CHAMPION DRAFT STALLION** (2006 foal exempt)  
Trophy donated by **Grant Creighton of Street KIA, Smiths Falls**
10. **PROGENY OF DAM**: Two animals of any age, the progeny of ONE DAM. Each animal must have been shown in its appropriate single section if offered. Both animals must be owned by the exhibitor and registered in the exhibitor's name. ONE ENTRY PER EXHIBITOR.

THE FOREGOING CLASS AND SECTIONS ARE OFFERED TO:

- 1A - CLYDESDALES
- 1B - BELGIANS
- 1C - PERCHERONS

**CLASS 3: COMMERCIAL -**

**PRIZE MONEY FOR CLASS 3:** Sections 1 to 5

1st - \$20, 2nd - \$15, 3rd - \$12

**SECTIONS:**

1. **BROOD MARE AND FOAL.**
  2. **FOAL** of current year.
  3. **FILLY OR GELDING**, 1 year
  4. **FILLY OR GELDING**, 2 years
  5. **FILLY OR GELDING**, 3 years and over
- ONE ENTRY PER EXHIBITOR

**CLASS 4: BEST FOAL** of 2006 shown that day. First prize foals only eligible. Trophy donated **In Memory of William Evans**, Pakenham, by **Richard Evans**, Almonte

**CLASS 5: CHAMPION HORSE OF THE DAY.** ONE ENTRY PER EXHIBITOR. Winner will receive the **J.B.Turner Memorial Trophy** and a Halter donated by **Joy Drynan, Harness Maker, Almonte**

**CLASS 6A: JUNIOR SHOWMANSHIP** - open to juniors 7 to 13 years of age on Jan. 1/06

**CLASS 6B: JUNIOR SHOWMANSHIP** - open to juniors 14 to 20 years of age on Jan. 1/06

Juniors must show draft horse on the line with the following areas to be considered: WALK, TROT, TURN, WATCHING THE JUDGE, BACK-UP, PRESENTATION, SUITABILITY OF SHOWMAN TO HORSE, HANDLING, GROOMING, DECORATIONS, APPOINTMENTS AND APPEARANCE, ABILITY TO HANDLE AND CONTROL HORSE, PROTECTIVE FOOTWEAR.

**NOTE: Stallions 1 year and over cannot be shown.**

**PRIZE MONEY FOR CLASSES 6A & 6B:**

First three placings in each of Classes 6A and 6B will receive \$15.00 each, remaining entries \$10.00 each. A trophy and \$5.00 to each entry in Class 6A is donated by **Mary Turner, Almonte**. \$5.00 to each entry in Class 6A and 6B is donated by **Eastern Regional Clydesdale Association**, and \$25.00 is donated by the **Ontario Percheron Horse Assn.**

**CLASS 2: LIGHT HORSE SHOW**

CHAIRPERSON: Judy Wellington (257-4623)

SHOW STARTS Saturday, July 22/06 at 9:00 a.m. SHARP.

Entries: Mail to NLAS or bring to Fair Office after July 18/06

Please include Coggins & proof of insurance.

**RULES & REGULATIONS:**

See "GENERAL INFORMATION" and "RULES & REGULATIONS OF N.L.A.S."

Entry Fees: Junior (17yrs. & under) - \$3.00/class

Showmanship - \$2.00

Senior -18yrs. & over) - \$5.00/class

Open - \$5.00

**PRIZE MONEY:** Junior, Senior & Open - \$15, \$12, \$10, \$8, \$6 \$5

Ribbons to 6th place in all sections.

Trophies and prizes in various classes.

**SECTIONS:**

1. **Showmanship**, horse or pony, handler 12 years and under
2. **Showmanship – Horse or Pony**, handler 13 to 17 years  
Classes 1 & 2 sponsored by **Wickstead Tack Shop**, Carleton Place.
3. **Junior Leadline**, English or Western – walk only – for riders not entered in a trot class. Must be led by an adult  
Sponsored by **Appleton Pony Club in memory of Kim Darwin**
4. **Junior Walk – Trot** – English or Western - for riders not entered in a canter class.  
Sponsored by **Bridewood Farms, Kathy & Alex McBride**
5. **Junior Leadline Game** – English or Western – for riders not entered in a trot class – must be led by an adult.  
Sponsored by **Heron Crest Farm.**
6. **Junior Walk – Trot Game** – E/W for riders not entered in a canter class.  
Sponsored by **Mississippi Vet Services, Nancy & Larry Cavan**
7. **Jr. English Pleasure** - ponies and horses 15 hands & under.  
Sponsored by **Heron Crest Farm.**
- 8.. **Jr. English Pleasure** (horses over 15 hands).  
Sponsored by **Highway #44 Gas & Variety Store, Almonte**
9. **Senior English Pleasure**  
Sponsored by **JR's Family Restaurant, Almonte**
10. **Junior English Equitation** – ponies & horses 15 hands and under. sponsored by **Kay Anderson.**
11. **Junior English Equitation** – horses over 15 hands.  
Sponsored by **Carmel Roy**
12. **Senior English Equitation.** Sponsored by **Almonte Country Depot.**



**CLASS 29: PERCHERON YOUTH TEAM CLASS – for Jr. Percheron**  
Members in good standing, 18 years & under. Ribbons only presented at Fair.

**CLASS 30: HEAVY HORSE INVITATIONAL.** Sponsored in part by Sid & Lillian Mohr, Almonte, Mary & Harry Poole, Nepean.

**NOTE: ALL TROPHIES IN THE HEAVY HORSE DIVISION ARE FOR ANNUAL COMPETITION EXCEPT FOR CLASS 6.**

## **DO YOU MAKE THE BEST CHILI?**

### **“PROVE IT!!”**

Enter the CHILI COOK-OFF on Saturday, July 22, 2006 at 4:30 p.m. in the Main Hall at the Almonte Fair

1. All entries must be made at the office to obtain an entry number and a tag.
  2. All entries must be in the designated area of the Main Hall by 3:00 p.m. on Saturday, July 22/06.
  3. All entries must be in electric crock pots.
  4. All entries will be judged by the public.
- In order to judge the chili entries, a person must pay \$3.00 which entitles them to judge each chili entry and includes a dinner roll and a bottle of water. Payment of \$3.00 to be made at the Chili Cook-Off Site.

**PRIZE MONEY:** 1<sup>st</sup> - \$25, 2<sup>nd</sup> - \$15, 3<sup>rd</sup> - \$10

Sponsored by “Be Seated”, Pierre Amyotte, Water Street, Almonte.  
e-mail: [info@beseated.ca](mailto:info@beseated.ca)

<b>Joy's Harness Shop</b>		
Blanket repair / manufacturing Harness repair / manufacturing		
Nylon	Joy Drynan R.R. #4, Almonte, ON K0A-1A0 (613)-257-1266	Leather
Vinyl		Granite

**CLASS 7: LADIES CART CLASS – DRAFT & COMMERCIAL HORSES.**  
Open to ladies 19 years and over.

Sponsored by Wm. J. Stewart Transport Ltd., R.A. Sulphur Insurance and Keith & Joy Drynan – all of Almonte.

Trophy donated by Kerry Funeral Homes, Almonte & Carleton Place.  
PRIZE MONEY: 1<sup>st</sup> - \$50, 2<sup>nd</sup> - \$40, 3<sup>rd</sup> & out - \$30.

**CLASS 8: MINIATURE OPEN CART.**

Sponsored by DB Farms, Kars, Ontario  
PRIZE MONEY: 1<sup>st</sup> - \$35 2<sup>nd</sup> - \$30, 3<sup>rd</sup> & out - \$15.

**CLASS 9: TEAM OF PUREBRED MARES** - all breeds, hitched to suitable vehicle. Sponsored by Dale Larose, Carp, Ontario, Bert & Marion Timmins, Almonte and L.B.L. Contracting, Almonte, Ontario  
Trophy donated by Keith & Joy Drynan, Almonte.  
PRIZE MONEY: 1st - \$55, 2nd - \$45, 3rd & out - \$35.

**Class 10: MINIATURE UNICORN**

Sponsored by Evelyn Wheeler, Barrister & Solicitor, and Dr. M. Dolan and Dr. N. Louis, all of Almonte, Ontario.  
PRIZE MONEY: 1<sup>st</sup> - \$50, 2<sup>nd</sup> - \$40, 3<sup>rd</sup> & out \$25..

**CLASS 11: FOUR-HORSE DRAFT TEAM TANDEM** (60% performance, 40% horses & equipment). Sponsored in part by Don Lockhart, Ashton, Ont., and Neilcorp General Contracting, Almonte  
Trophy: Russell Turner Memorial Trophy donated by Lana and Keith McDonald.

PRIZE MONEY: 1st - \$100, 2nd - \$90, 3rd - \$70, 4<sup>th</sup> & out - \$65.

**CLASS 12: TEAM OF COMMERCIAL HORSES IN HARNESS.**

Sponsored by Dr. Ray & Kay James, Almonte.  
Memorial Trophy in memory of Francis Naismith,  
PRIZE MONEY: 1st - \$50, 2nd - \$40, 3rd - \$35, 4th and out - \$30

**CLASS 13: TEAM OF MINIATURES**

Sponsored by Kilpatrick Fuels, Perth, and Drs. Andre and Evelyn St. George, Almonte.  
PRIZE MONEY: 1<sup>st</sup> - \$50, 2<sup>nd</sup> - \$40, 3<sup>rd</sup> & out - \$25

**CLASS 14: SIX-HORSE TEAM DRIVEN BY ONE PERSON.**

(60% performance, 40% horses & equipment). Sponsored in part by **Karson Kartage**, Carp, **Bryson & Kathy Burgess**, Kinburn., **Ron's Pumping Service**, Pakenham, **John & Ruth More**, Almonte

Trophy donated by **Mississippi Mills Fire Dept.**

PRIZE MONEY: 1st - \$200, 2nd - \$175, 3rd and out - \$150.

**CLASS 15: MINIATURE FOUR-HORSE HITCH**

Sponsored by **John & Ruth Steele**, Almonte, **Dr. Jim Kontogiannis**, Almonte and **John Cundell**, Ottawa.

PRIZE MONEY: 1<sup>st</sup> - \$50, 2<sup>nd</sup> - \$40, 3<sup>rd</sup> & out - \$30

**CLASS 16: FOUR HORSE TEAM TANDEM - COMMERCIAL**

Sponsored in part by **T. Cavanagh Construction**, Ashton and **The Ottawa Valley Commercial Horse Association**.

Trophy donated by **Sears Ottawa Inc.**

PRIZE MONEY: 1st - \$100, 2nd - \$90, 3rd - \$70, 4th & out - \$65.

**CLASS 17: EIGHT HORSE HITCH**

Sponsored by **T. Cavanagh Construction** of Ashton, Ontario.

**Russell Sadler Memorial Trophy** donated by his children **Donnie, Doug and Karen**.

PRIZE MONEY: \$800.00 divided equally amongst exhibitors.

**CLASS 18: COMMERCIAL UNICORN HITCH.**

Sponsored by **Carlson Wagonlit**, of Carleton Place and **McDougall Insurance Brokers**, Arnprior

Trophy donated by **Gilmour Drummond: The "Doreen and Stewart Drummond Memorial Trophy"**.

PRIZE MONEY: 1<sup>st</sup> - \$70, 2<sup>nd</sup> - \$60, 3<sup>rd</sup> & out - \$45

**Class 19: BAREBACK ALL BREEDS RIDING CLASS – Walk, Trot and Canter.** Open to ages 15 and up.

PRIZE MONEY: 1<sup>st</sup> - \$25, 2<sup>nd</sup> \$20, 3<sup>rd</sup> and out - \$15.

Sponsored in part by **Anonymous**

**CLASS 20: DRAFT UNICORN HITCH.**

Sponsored by: **Robertson Carpentry**, Pakenham, **Dr.S. Wicklum**, **The Family of The Late Frank & Edith Hamilton** and **Cooney Construction**, all of Almonte

Trophy donated by **Bob & Isabel Hawkins**, Carleton Place.

PRIZE MONEY: 1st - \$70, 2nd - \$60, 3rd & out - \$45.

**CLASS 21: MINATURE JUNIOR CART driven by boy or girl under 13 Years old.**

Sponsored by **Edna Denafrio & Family**, Richmond, Ont., and anonymous.

PRIZE MONEY: 1<sup>st</sup> - \$35, 2<sup>nd</sup> & out \$30, 3<sup>rd</sup> & out - \$15.

**CLASS 22: TEAM OF HEAVY DRAFT HORSES** (purebred exempt).

Sponsored in part by **Lyle Killeen**, **Terry Cairns** and **Coady's Car Care** – all of Almonte. Trophy donated by **Jean Cochran - W.R. Cochran Memorial Trophy**.

PRIZE MONEY: 1st - \$50, 2nd - \$40, 3rd & out - \$35.

**CLASS 23: TEAM OF DRAFT OR COMMERCIAL HORSES** - owned and driven by a resident of Lanark County or a resident within a radius of ten miles of Almonte. ONE ENTRY PER EXHIBITOR.

Sponsored in part by **Bert Lowry** and **Alex Stewart** of Almonte.

**Hugh G. McClymont Memorial Trophy** donated by friends.

PRIZE MONEY: \$30 to each entry.

**Class 24: MINIATURE SINGLE TANDEM HITCH**

Sponsored in part by **Dr. H. Abramenko**, Almonte and **Janet Foster**, Accountant, Carleton Place.

PRIZE MONEY: 1<sup>st</sup> - \$50, 2<sup>nd</sup> - \$40, 3<sup>rd</sup> and out - \$25.

**CLASS 25: DRAFT & COMMERCIAL TROIKA HITCH** (3 horses abreast)

Sponsored in part by **Don Sparling**, Nepean, and **Shirley Sonnenburg**, Almonte, in memory of the late **Stan Sonnenburg**.

Trophy donated by **Mike & Bev. Fergusson & Family**, Smiths Falls.

PRIZE MONEY: 1<sup>st</sup> - \$65, 2<sup>nd</sup> - \$55, 3<sup>rd</sup> & out \$45.

**CLASS 26: SINGLE TANDEM HITCH - COMMERCIAL**

Sponsored in part by **Reg. Gamble**, Almonte, and **Clayton General Store**, Clayton.

Trophy donated by **John & Ruth Steele**, Almonte.

PRIZE MONEY: 1st - \$50, 2nd - \$40, 3rd & out - \$30

**CLASS 27: TEAM OF LIGHT DRAFT HORSES** (purebred exempt).

Sponsored in part by **Mary & Jim Tims** and **Jack & Kaye Devine**, all of Almonte.

**Gordon & Isabel Drynan Memorial Plaque** donated by **The Family**.

PRIZE MONEY: 1st - \$50, nd - \$40, 3rd & out - \$35.

**CLASS 28: JUNIOR DRIVE** open to boys and girls 12 to 18 years driving a Draft or Commercial Team. MUST BE ACCOMPANIED BY AN ADULT.

Sponsored in part by **Bert & Marion Timmins**, and **Andrew and Jean MacGregor**, all of Almonte and **Nepin & Winter, Accountants**, Carleton Place.

Trophy donated by **The Dryburgh Family**.

PRIZE MONEY: 1st - \$35, 2nd - \$25, 3rd and out - \$20



## Exhibitor No: \_\_\_\_\_

Exhibitor's Name: \_\_\_\_\_

Address (Full): \_\_\_\_\_

Postal Code: \_\_\_\_\_

Phone No: (    ) \_\_\_\_\_

BREED: \_\_\_\_\_

NO. OF HEAD: \_\_\_\_\_

NO. OF STALLS REQUIRED: \_\_\_\_\_

MEMBERSHIP RETAINED FROM LAST YEAR \_\_\_\_\_  
IF NO - PLEASE ENCLOSE YES NO

INSURANCE CO.: \_\_\_\_\_

POLICY NO.: \_\_\_\_\_

EXPIRY DATE: \_\_\_\_\_

EXHIBITOR'S SIGNATURE: \_\_\_\_\_

DATE: \_\_\_\_\_

OFFICE USE ONLY

[illegible]

MAIL ENTRIES TO:  
N.L.A.S.  
Box 1608  
Almonte, Ont.  
K0A 1A0

THIS FORM DOES NOT CONSTITUTE AN ENTRY FORM UNTIL PROPERLY SIGNED, ALL FEES PAID, AND A COPY OF COGGINS TEST AND PROOF OF LIABILITY INSURANCE RECEIVED BY THE SECRETARY-TREASURER.

DEDUCT FROM PRIZE WINNINGS:  
ENTRY FEES: \_\_\_\_\_  
MEMBERSHIP 19 \_\_\_\_\_  
STALLS: \_\_\_\_\_  
TOTAL: \_\_\_\_\_

	SUB-TOTAL
TOTAL DEDUCTIONS	
	TOTAL

Chq. No.